



Bin washing line



## Bin washing line

In the bin washing line, stacked bins (optionally according to customer's requirements) are de-stacked and turned upside down for a more effective washing.

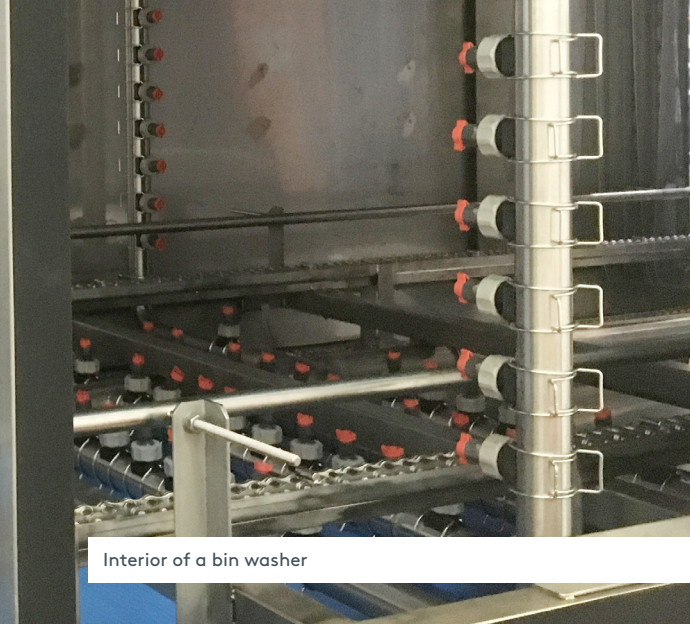
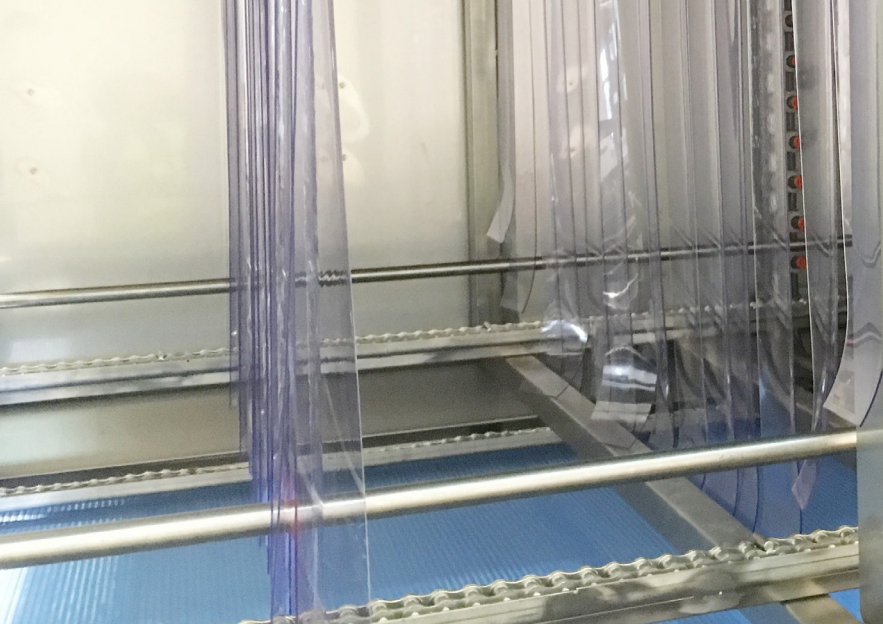
After washing they are turned around upside up for fungicide application (optional) and stacked the same way they entered.

The whole line is built in stainless steel to avoid corrosion.

Optionally it can incorporate a water heating system through a boiler.

## FEATURES & BENEFITS

- Circuit of the bin washing line is closed, so that a minimum water and energy consumption is achieved.
- Water is boosted by a pump, and the water circuit has two filtration systems to guarantee the cleaning. Cleaning products are frequently mixed with water to increase the effectiveness of washing.
- Highest quality standards to ensure long durability.



Interior of a bin washer

## KEY SPECIFICATIONS

- Designed to comply with the Machine Directive of the European Union (CE) 2006/42/CE

- Maximum capacity: 120 bins/hour

- Options: fungicide applicator, stacker, de-stacker, water heating equipment.

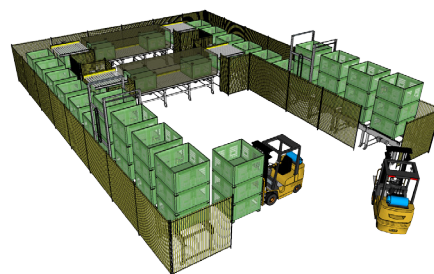
## TECHNICAL INFORMATION

- Power: 3 phase - 380 V - 50 Hz

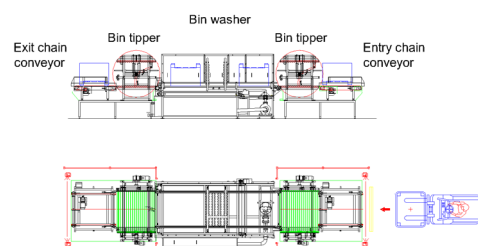
- Power consumption: (Entry and exit conveyor, 2 bin tipper and bin washer): 22,22 KW

- Dimensions and electrical consumption will be adjusted according to the fungicide applicator, accumulating conveyors and stacking/de-stacking (Stacker, de-stacker 1,12 Kw, Fungicide applicator 1,11 Kw)

- Tank capacity: 1.665 liters



3D scheme of a configuration with double bin washing



Plant and side view of a bin washing line