

InVision 5000

Compac's industry-leading InVision system allows packhouses to reduce the amount of labor required for sorting, whilst improving consistency and accuracy levels of sorted produce. InVision 5000's color, size and shape grading make it a great solution for both pre-size and commit-to-pack applications. Using a single view per lane, InVision 5000 is a cost effective method of achieving consistent color and dimension grading for your produce. Combined with Compac's industry leading software, InVision 5000 provides a grading experience that is both easy-to-use and high performing. Targeted commodities include apples, citrus, kiwifruit, stonefruit, avocados and tomatoes.

FEATURES & BENEFITS

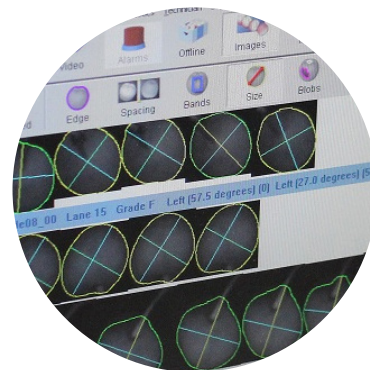
- Consistent sorting ensures all produce is classified by an objective grading standard
- Simple setup enables efficient installation on sorting machines from Compac as well as other vendors
- Flexible software means InVision 5000 can be specifically configured to meet the requirements of each batch, variety or day
- An easy to use interface allows operators to focus on managing the line
- Industrially designed hardware ensures reliability and maximises uptime
- Efficient image processing allows for high throughput to increase completed packs per hour
- InVision 5000's proven track record means you can rely on it to efficiently replace labour and enable a superior cost per pack
- High accuracy sizing enables precise packouts maximizing returns for growers



Industrially designed hardware ensures reliability and maximises uptime

MODES OF OPERATION

- **Size:** Accurate size grading enables high consistency packs
- **Shape:** A range of attributes are identified to allow detection of various shape defects
- **Color:** A high precision color split can be easily achieved with InVision 5000



Accurate size grading enables high consistency packs



InVision's intelligent software is powerful and easy to operate



InVision SFS 9000 can grade up to 90 fruit per second on each lane



InVision SFS 9000

InVision SFS 9000 is Compac's world leading size, shape, color and blemish grading platform for cherries. It combines powerful imaging, controlled lighting, and cherry rotation with a robust and maintainable design to enable accurate and consistent grading. Color and infrared cameras are used in combination with Compac's industry leading software to provide a grading experience that is both easy-to-use and high performing.

FEATURES & BENEFITS

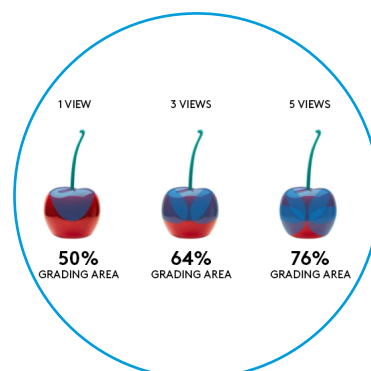
- **Size:** InVision builds a 3D model of each fruit, cherries are generally sized by equatorial diameter to accurately match industry sizing standards
- **Shape:** Compac's software has been built to recognise specific shape attributes, this is particularly useful for identifying doubles and spurs
- **Color:** InVision SFS 9000 includes tried and testing color mapping that provides precise color splits to ensure high color consistency in every box
- **Blemish:** Powerful hardware combined with intelligent software allows InVision SFS 9000 to accurately detect and classify a wide range of typical cherry defects
- **Software:** Compac's industry leading blemish software incorporates new machine learning algorithms to provide an easy-to-use interface that does not compromise on performance



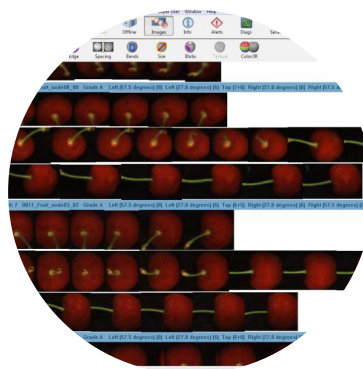
Compac's InVision SFS 9000 combines high performance with ease-of-use for a world class grading experience

MODES OF OPERATION

- **Top View:** For color, shape and sizing applications, InVision SFS 9000 can be configured to grade using a single camera position per lane
- **Five View:** Compac has a patent pending on a five view system which includes ultra-low views to deliver maximum surface coverage for defect grading, enabling higher accuracy and consistency than other systems
- **Retrofit:** Compac SFS can be specifically designed for installation on hardware from other vendors to provide a low cost entry to world class cherry grading



Compac's patent pending Five View system sees over 76% of the cherry



InVision's intelligent software is powerful and easy to operate



InVision 5.0

Compac is soon to release a significant update to its InVision optical grading system software, – InVision 5.0 will give existing customers access to new innovations in fruit defect detection, providing greater grading accuracy with improved software usability. Read more and register for a 2016 upgrade slot below.

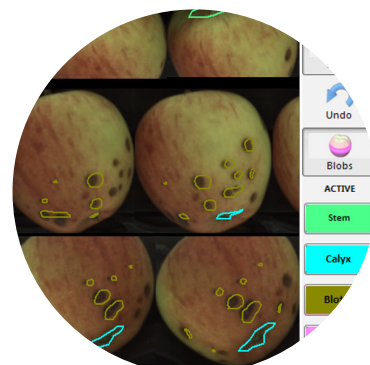
The new intelligent defect detection and classification features of InVision 5.0 will allow Compac operators to essentially 'teach' the software to detect specific defects on fruit, improving grading accuracy, reducing grading line labor and providing valuable data on the condition of your crop that can be fed back to orchards for harvest management, and used to provide feedback to growers on the condition of their crop to increase their yield.

- **Intelligent Defect Detection**
InVision 5.0 allows the Compac operator to select areas of skin on the fruit surface and tell the software if it is good skin or bad skin. The software can 'learn' and determine what good and bad areas of the fruit look like. Essentially, the operator trains the machine to recognize surface patterns, colors, textures and other specific skin-surface characteristics they wish to detect and grade appropriately
- **Intelligent Defect Classification**
With InVision 5.0 the operator is able to select a defect on the fruit and classify it according to what it is. For example a russet or puncture on the skin, etc. This allows the operator to classify different grades of fruits based on defects
- **Improved Usability**
InVision is Compac's most advanced and highest performing optical sorting software, being the most flexible and feature rich on the market. The software still delivers all the power of previous InVision version but is much more automated, intelligent and easier to use



NEW FEATURES

- **SmartSkin Auto Defect Identification:**
Utilizing machine learning algorithms, the operator teaches the system which parts of the surface are good and bad skin areas with a simple click and drag interface. SmartSkin targets hard to detect defects such as apple russet and greatly simplifies defect detection and improves accuracy
- **SmartMap Auto Defect Classification:**
With a simple point and click interface, InVision is able to learn and classify defect types. This enables the operator to tune the system and create sophisticated pack grades with ease
- **Improved Defect Tracking:**
We've improved how we track defects between images so the effect of corkscrewing fruit on defect detection is significantly reduced
- **Enhanced Color Grading:**
We've increased the resolution of the color seeds so that color grading is more precise than ever before
- **Old Bruise Detection:**
We've developed a new 'old bruise detector' feature that greatly increases our accuracy at grading those hard-to-see old bruises
- **General UI Upgrades:**
We've made a number of little changes to make our interface that much easier to use; saving operators both time and effort



SmartMap Auto Defect Classification